



e-ISSN: 2319-8753 | p-ISSN: 2347-6710

# IJIRSET

International Journal of Innovative Research in  
**SCIENCE | ENGINEERING | TECHNOLOGY**

# INTERNATIONAL JOURNAL OF INNOVATIVE RESEARCH

IN SCIENCE | ENGINEERING | TECHNOLOGY

Volume 11, Issue 8, August 2022

**ISSN** INTERNATIONAL  
STANDARD  
SERIAL  
NUMBER  
INDIA

Impact Factor: 8.118

 9940 572 462

 6381 907 438

 [ijirset@gmail.com](mailto:ijirset@gmail.com)

 [www.ijirset.com](http://www.ijirset.com)

# Internet of Things-based Smart Waste Collector

Arya Gavande

Certified Microsoft Office Specialist Associate -12<sup>th</sup> Grade Student of Woodridge High School Aurangabad, Maharashtra, India

**ABSTRACT:** The Internet of Things should have the ability to execute straightforwardly countless frameworks while giving open access to choose subsets of information for the advancement of computerized administrations. Building general engineering for the IOT enabled is an extremely complex undertaking, for the most part to a great degree extensive assortment of gadgets, and administrations that might be engaged with such a framework. One of the real concerns in our case is solid waste administration and refuse transfer which aggravates the adjust of nature and additionally has an unfriendly consequence for the soundness of the general population. The discovery, checking and administration of squanders is one of the essential issues of the present time. The method for physically observing the losses in squander receptacles is a mind-boggling process and uses more human exertion, time, and cost which does not work with the present-day innovations in any capacity. In such propelled technique squander administration is observed and gathered. Undertaking IOT enabled Waste Monitoring framework is an extremely creative framework that will keep the offices clean and civilization sound. This framework screens the refuse containers and educates about the level of waste gathered in the trash receptacles through a web page. The site also displays information in a chart to the client.

**KEYWORDS:** Wi-Fi modem, Arduino microcontroller, IOT enabled open source platform, Sensors, Solids Waste management.

## I. INTRODUCTION

Waste Monitoring System:- Garbage may comprise the undesirable material left finished from offices, Societies, Colleges, homes, and so forth. This undertaking is identified with the "Smart City" considering "IOT enabled". For a keen way of life, tidiness is required, and neatness begins with Garbage Bin. This undertaking will kill or limit the garbage transfer issue. The **IOT enabled** is a late correspondence worldview that imagines the near future, in which the objects of regular day-to-day existence will be equipped with microcontrollers, handsets for digital communication, and appropriate convention stacks that will make them ready to speak with each other and with the clients, turning into a basic piece of the Internet. This venture **IOT enabled** Waste Monitoring framework is a very innovative framework that will keep the urban areas clean. It screens the trash containers and illuminates the level of waste gathered in the trash containers through a web page. Ultrasonic sensors are placed over the receptacles to recognize the trash level and compare it with the rubbish canister's profundity. The framework makes use of the Arduino family microcontroller, LCD screen, and Wi-Fi modem for sending information and a signal. The framework is powered by a 12V transformer. The LCD screen is utilized to display the status of the level of trash collected in the bins. Whereas a web page is referred to demonstrate the status of the level of the trash collected to the user monitoring it. The web page gives a graphical perspective of the garbage receptacles and features the trash gathered in shading with a specific end goal to demonstrate the level of waste gathered. The LCD screen demonstrates the status of the trash level. The system puts on the signal when the level of junk collected crosses as far as possible. Along these lines, this framework keeps the city clean by advising about the waste levels of the bins by giving a graphical picture of the canisters through a website page.

## II. LITERATURE SURVEY

A portion of the accompanying refuse type Packaging waste, paper waste, Inorganic waste, Liquid waste, and so forth. In strong waste container checking framework junk canister set the open place then Camera set for rubbish receptacle area. The camera caught a picture of a rubbish canister. Radio Frequency Recognizable proof (RFID), GPS, and GIS send the picture to the work station. The RFID per user and camera are mounted in the truck when the truck comes

nearer to the container RFID per user conveyed the RFID tag and sends all data. The Framework utilizes Controlling Hut. Controlling Hut is SMS Technology. The GPS and GPRS mapping server to top off in the meantime. The underlying arranged course is spared with the goal that when continuous information is gotten just part of the arranged way might be changed. For refuse identification, a weight sensor can be utilized. It gives the heaviness of the refuse in the dustbin. Be that as it may, it doesn't give any data about the level of the refuse in the dustbin. Henceforth creator utilized an Infrared (IR) sensor for refuse recognition. IR sensor transmits light that is imperceptible to the human eye since it is at infrared wavelengths, yet it can be recognized by electronic devices. IR transmitter comprises of LED which sends the IR bar. The innovation utilizes an Infrared sensor (IR), Microcontroller, and graphical user interface (GUI). Infrared sensor (IR), Global Framework for Mobile. They just utilize the GSM module. Power and web supply proceed with on. Smart junk administration framework utilizing IR sensor, microcontroller, and GSM module. This framework guarantees the cleaning of dustbins before long when the trash level achieves its greatest. Arduino is best depicted as a solitary board PC that has intentionally been intended to be utilized by individuals who are not specialists in gadgets, and programming. It is modest, cross-stage (the Arduino programming keeps running on Windows, Mac OS X, and Linux), and simple to program. Both Arduino equipment and programming are open sources and extensible. Arduino is moreover capable: in spite of its minimal size, it has about to such an extent registering muscle as one of the first route PCs from the Apollo Programmers, architects, do-it-yourselfers, and craftsmen around the globe exploit Arduino's energy and straightforwardness to make a wide range of inventive gadgets, including intuitive sensors, work of art, what's more, toys. Breaking down information from a different area. The control station arranges all the data and put it away in the framework database. The receptacle status and waste truck are monitored. In squander canister observing framework utilizing zig bee and Global versatile correspondence framework (GSM). The sensors are put in the basic junk containers set in general society put when the trash achieves the level of the sensors. At that point that showed will give in sign to the driver by ARM7 they sending SMS utilizing GSM innovation. The innovation is used by Zig bee, Global portable framework (GSM), and ARM 7 Controller. The scope of correspondence of the zig bee is very nearly 50 meters. They use to extend GSM Module, breaking down the picture we get a thought regarding the level of garbage. The zig bee and GSM framework would have the capacity to screen the strong waste gathering process. This procedure beat a few disservices which utilization of least course are, minimal effort, fuel utilization, and clean condition. The waste administration is worked around a few components. Squander things, local receptacles, waste sacks, aggregate holders also, and gathering vehicles. The waste stream begins from the squander thing and the household container to end in the gathering vehicles. Utilize the waste ID for the arranging process. Based on RFID innovation new junk pack is included as an aggregate holder. The innovation utilizes Radio Frequency Recognizable proof (RFID), Smart vehicular, and Trash Bags. They just distinguish RFID labels from trash canisters, Low information speed, and high cost. The zig bee and GSM framework would be ready to screen the strong waste accumulation process. This strategy defeats a few burdens which are the utilization of the least course, minimal effort, fuel utilization, and clean condition. A solitary directional barrel is suspended alongside the cover of the dustbin. The cylinder is allowed to climb and down vertically inside the dustbin to a specific level. A plate is joined to the barrel for compacting the refuse. The state of this plate relies on the state of the dustbin.

### III. FRAMEWORK ARCHITECTURE

The **IOT-enabled** Waste Monitoring framework is an exceptionally imaginative framework that will keep the offices and society clean. This framework screens the trash receptacles and advises about the level of refuse gathered in the rubbish canisters through a web page. For this, the framework utilizes ultrasonic sensors set over the canisters to distinguish the waste level and contrast it and the junk containers' profundity. The framework makes utilization of Arduino family microcontroller, LCD screen, Wi-Fi modem for sending information, and a bell. The 12V transformer is used to control the framework. The LCD screen is utilized to show the status of the level of rubbish gathered in the receptacles.

Though a website page is worked to demonstrate the status to the client checking it. The web page gives a graphical perspective of the refuse containers and features the rubbish gathered in shading with a specific end goal to demonstrate the level of trash gathered. The LCD screen demonstrates the status of the rubbish level. The framework puts on the signal when the level of junk gathered crosses as far as possible. Along these lines, this framework keeps the city clean by advising about the junk levels of the canisters by giving the graphical picture of the containers through

a website page. The ESP8266 Wi-Fi Module is an independent SOC with a coordinated TCP/IP convention stack that can give any microcontroller access to your Wi-Fi module.



Figure 1 Graphical Presentation of Framwork

#### IV. EQUIPMENT USED

##### A) Microcontroller

It gets data from the sensor and processes it. It contrasts the data received with the limit level set and an appropriate yield is produced. The LPC2131/32/34//38 microcontrollers depend on 16/32-bit ARM7TDMI-S CPU with continuous copying and inserted follow bolster, that consolidates the microcontroller with 32 kB, 64 kB, 128 kB, 25kB of installed fast blaze memory. A128-bit wide memory interface and one-of-a-kind quickening agent design empower 32-bit code execution at the greatest clock rate. Power Supply: We use a 12v power supply in our project to give DC voltage to the segments on board. 3.3V for lpc2138 and 4.2v for the Wi-Fi module are applied respectively from the control supply. 5V is required for hand-off connected to the control supply.

##### B) WI-FI Modem

This module has a sufficiently effective installed handling capacity that enables it to be coordinated with the sensors and other application particular gadgets through its GPIOs with insignificant advancement forthright and negligible stacking amid runtime. Its high level of the on-chip mix takes into consideration insignificant outside hardware, including the front-end module, which is intended to involve negligible PCB territory. The ESP8266 underpins APSD for VoIP applications and Bluetooth conjunction interfaces, it contains a self-aligned RF enabling it to work under every single working condition and requires no outer RF parts.



There is a relatively boundless wellspring of data accessible for the ESP8266, all of which has been given by astounding group bolster. In the Documents segment underneath you will discover numerous assets to help you in utilizing the ESP8266, even guidelines on the best way to change this module into an IOT (Internet of Things) arrangement! Note: The ESP8266 Module isn't fit for 5-3V rationale moving and will require an outer Logic Level Converter. Kindly don't control it specifically from your 5V dev board.

C) *Ultrasonic Sensor*

The Ultrasonic Sensor conveys a high-recurrence sound heartbeat and afterward times to what extent it takes for revert back of the sound to reflect. The ultrasonic sensor has two lead-ins on its front. One opening transmits ultrasonic waves, (similar to a small speaker), alternate gets them, (similar to a modest receiver). The speed of sound is roughly 341 meters (1100 feet) every second in the air. The ultrasonic sensor utilizes this data alongside the time distinction between sending and getting the sound heartbeat to decide the separation of a question.

D) *Servo Motor and Infrared Sensor*

This is used to open the lid of the dustbin whenever someone comes into its range, with the help of an infrared sensor the lid of the dustbin opens.

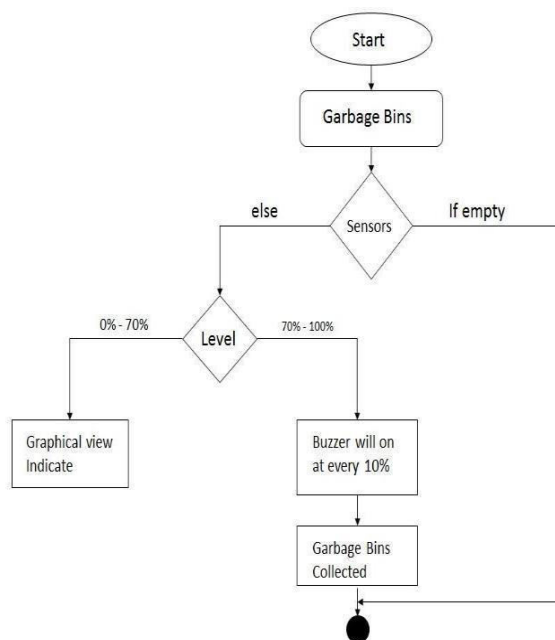


Figure 2 Flowchart

V. POINTS OF INTEREST

Monitors the waste containers and illuminates the level of rubbish gathered in the trash canisters. To keep our environment clean and green. The cost and exertion are less in this framework. Therefore it is an affordable solution for waste collection hence it is called "Smart Waste Collector".

VI. APPLICATIONS

This venture can likewise be utilized as a part of the " SMART CITY". This undertaking is additionally useful in the administration project of "SWACHH BHARAT MISSION". The mission is the vision of our Prime Minister.



## VII. CONCLUSION

In this venture, an incorporated arrangement of Wi-Fi modem, IOT, GSM, and Ultrasonic Sensor is presented for productive and monetary garbage accumulation. The created framework gives an enhanced database to refuse the accumulation time and waste sum at every area. We investigated the arrangements as of now accessible for the execution of IOT enabled. By executing this task we will dodge over streaming of trash from the holder in the local location which is beforehand either stacked physically or with the assistance of loaders in customary trucks. It can naturally screen the trash level and send the data to the gathering truck. The advancements which are utilized as a part of the proposed framework are adequate to guarantee the reasonable and ideal solid junk gathering process moreover observing and administration for green conditions.

## REFERENCES

- [1] Prof. R.M.Sahu, Akshay Godase, Pramod Shinde, Reshma Shinde, "Garbage and Street Light Monitoring System Using Internet of Things" INTERNATIONAL JOURNAL OF INNOVATIVE RESEARCH IN ELECTRICAL, ELECTRONICS, INSTRUMENTATION AND CONTROL ENGINEERING, ISSN (Online) 2321 – 2004, Vol. 4, Issue 4, April 2016.
- [2] Kanchan Mahajan, Prof.J.S.Chitode, "Waste Bin Monitoring System Using Integrated Technologies", International Journal of Innovative Research in Science, Engineering and Technology (An ISO 3297: 2007 Certified Organization) Vol. 3, Issue 7, July 2014.
- [3] Md. Shafiqul Islam, M.A. Hannan, Maher Arebey, Hasan Basri, "An Overview For Solid Waste Bin Monitoring System", Journal of Applied Sciences Research, ISSN 181-544X, vol.5, Issue 4, February 2012.
- [4] Twinkle sinha, k.mugesh Kumar, p.saisharan, "SMART DUSTBIN", International Journal of Industrial Electronics and Electrical Engineering, ISSN: 2347-6982 Volume-3, Issue-5, May 2015.
- [5] IoT Developments in Connectivity for Industrial and Individual Application Panel at PIMRC, October 2017.
- [6] IEEE IoT Initiative workshop at IEEE QRS, July 2017.
- [7] IoT Workshop" SRM Institute of Science and Technology", August 2017.
- [8] Narendra Kumar G., Chandrika Swami, and K. N. Nagadarshini, "Efficient Garbage Disposal Management in Metropolitan", Cities Using VANETs Journal of Clean Energy Technologies, Vol. 2, No. 3, July 2014.
- [9] Emily Gertz, Patrick Di Justo, "Environmental Monitoring with Arduino" Copyright © 2012 Emily Gertz and Patrick Di Justo. All rights reserved. Printed in the United States of America, ISBN: 9781-449-31056-1, January 20, 2012.



**INNO SPACE**  
SJIF Scientific Journal Impact Factor  
**Impact Factor: 8.118**



**ISSN** INTERNATIONAL  
STANDARD  
SERIAL  
NUMBER  
INDIA



# INTERNATIONAL JOURNAL OF INNOVATIVE RESEARCH

IN SCIENCE | ENGINEERING | TECHNOLOGY

 **9940 572 462**  **6381 907 438**  **ijirset@gmail.com**



[www.ijirset.com](http://www.ijirset.com)

Scan to save the contact details